



## Bathing establishment Fact Sheet

Name of bathing establishment	SAN FRANCESCO
Address	Via Arenile, 77
City	Forte dei Marmi (Lu)
Contacts	Telephone +39 0584 881644 <a href="mailto:bagnosanfrancesco@gmail.com">bagnosanfrancesco@gmail.com</a>
Website	Not detected

**TESTED BY:** [Handy Superabile Social Promotion Association in summer 2023](#)

**Please note** The following information refers to the verification date shown at the bottom of each sheet. The Association is not responsible for any significant changes made to the property after the visit.

### Summary

Bathing establishment fact Sheet .....	1
Arrival at the facility .....	2
Private/public parking.....	2
Pathway from the parking lot to the main entrance .....	3
Reception welcome.....	3
Bar/restaurant .....	4
Internal pathways and common services .....	5
Internal pathways.....	5
Toilet and shower accessible to guests with reduced mobility .....	5
Changing room .....	6
Beach.....	6
Children's play area .....	8
Pool.....	8
Medical practices/health facilities.....	9

Project carried out with the contribution of

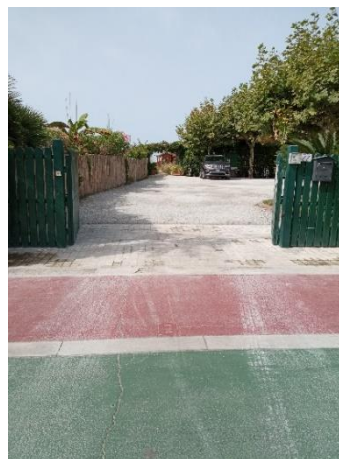




**Arrival at the facility**



**Private/public parking**

Presence of private parking	YES
Fund type of private parking	gravel
Presence of parking space reserved for people with disabilities	NO
Public parking nearby	YES
Fund type of public car park	asphalt





**Pathway from the parking lot to the main entrance**

Pathway from the parking lot to the entrance	flat on a gravel surface which can make movement difficult for people in wheelchairs
There are indicators and tactile maps	NO
Useful width of door/entrance passage	greater than 90 cm
	

**Reception welcome**

Umbrella booking system	<input type="checkbox"/> Via the web <input checked="" type="checkbox"/> Via telephone <input checked="" type="checkbox"/> On site
Presence of multilingual staff	not detected
Presence of plant plan with legend of services available	NO
Presence of visuo-tactile map	NO





Noticeboard/information panel sat an average height of 130 cm in a well-lit area and a character size of at least 14 dpi with a contrast ratio greater than 4.5:1	NO
The staff has undergone training on welcoming people with various disabilities	NO

### Bar/restaurant

Type of venue	Bar/restaurant
Access to the venue	flat
Useful width of door/entrance passage	120 CM
Bar counter	120cm
Type of tables	with 4 legged
Space under the floor tables	greater than 70 cm
Multilingual menu	not detected
Menu with large print characters	NO
Braille menu	NO
Table service for people with disabilities	YES
Availability of food for celiacs	<input type="checkbox"/> bread <input type="checkbox"/> pasta <input type="checkbox"/> cookies <input type="checkbox"/> ice creams <input type="checkbox"/> pre-packaged foods





**Internal pathways and common services**

**Internal pathways**

<p>Indicate whether the entrance-beach connection pathways are flat or with ramps in addition to those already described</p>	<p>obstacle-free pathways</p>
	

**Toilet and shower accessible to guests with reduced mobility**

<p>Number of toilets accessible/usable by guests with reduced mobility</p>	<p>1</p>
<p>Access to the venue</p>	<p>flat</p>
<p>Useful width of entrance door</p>	<p>90cm</p>
<p>Toilet height</p>	<p>50cm</p>
<p>Toilet seat with open front tooth</p>	<p>YES</p>
<p>Support handles</p>	<p>on both sides</p>





Flexible shower next to the toilet	NO
Free space on the sides of the toilet	to the left 25cm To the right large space front large space
Electric bell/telephone	NO
Washbasin with space underneath for a wheelchair	greater than 70 cm
Height from the ground to the lower edge of the mirror	74 cm
Baby changing table	NO
Shower accessible to guests with reduced mobility available	YES separated from the toilet room
Access to the shower room if separated from the toilet room	it is difficult to access due to a step and a very narrow door
Useful width of entrance door/gap if separated from the toilet room	64 cm
Floor-level shower	YES
Shower chair	missing
Support handle	missing
Presence of shower head or latch	fixed shower head
Electric bell/telephone	NO

### Changing room





Changing room accessible to guests with reduced mobility available	NO
--	----

### Beach

Type of beach	sand
Access to the beach	flat






Walkway to reach the umbrellas	YES
Type of walkway	cement
Walkway width	110cm
	
Removable platform between walkway and umbrella station to facilitate passage and parking with the wheelchair	YES
Available amphibious bathing chair for people with reduced mobility owned or through a bathing association	No, but you can request one of the four JOB chairs supplied to the Forte dei Marmi beach association
	





### Children's play area

Children's play area	accessible to children with reduced mobility
There are games for children with reduced mobility	NO
	

### Pool

The property has a swimming pool	YES
Access to the swimming pool	flat
Useful width of entrance gate	greater than 80 cm
Access to the tub	with ladder
Bathing aids for guests with reduced mobility	amphibious chair



Project promoted by



Regione Toscana



nardiniforniture\_fortedeimarmi



### Medical practices/health facilities

Hospitals near the facility	<b>Versilia Hospital SS 1, 335, 55049 Camaione LU Telephone: 0584 6051</b>
Other healthcare facilities	<b>ASL Health District No. 12 Viareggio Via Sant'Elme, 30 Tel. 058483873</b> <b>Green Cross Viale Italic, corner the via Risorgimento Tel. 058484013 Free first aid for white codes</b> <b>Night medical guard Tel. 0584 83896 (8pm-8am)</b>

Project carried out with the contribution of



Presidenza del  
Consiglio dei Ministri  
Ministro per la disabilità

Project promoted by



Regione Toscana

---

	<p><b>Mercy</b> Via PI da Carrara, 32 Tel. 0584752133/0584 752149 <b>Medical service "San Camillo" nursing home</b> Via PI da Carrara, 37 Tel. 0584 7391 <b>Dialysis service</b> presso Green Cross Viale Italice, corner the via Risorgimento Tel. 058484013 affiliated with AUSL</p>
--	--

TESTED BY: Handy Social Promotion Association. Superb in summer 2023

---

Project carried out with the contribution of



Presidenza del  
Consiglio dei Ministri  
Ministro per la disabilità